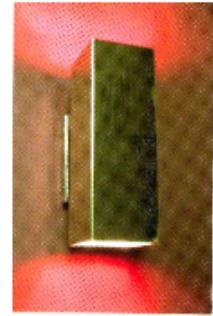
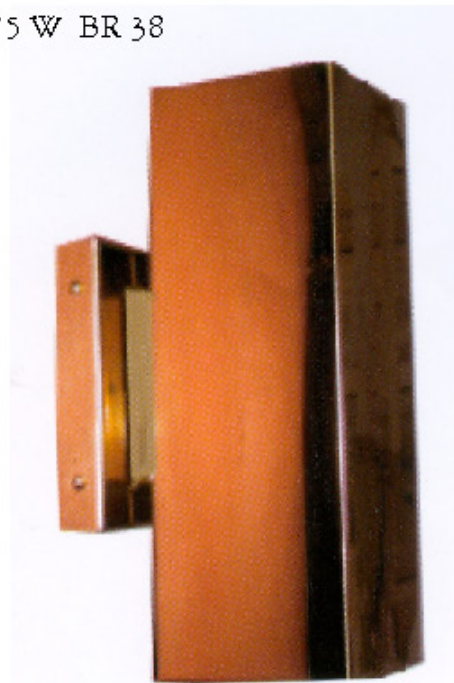
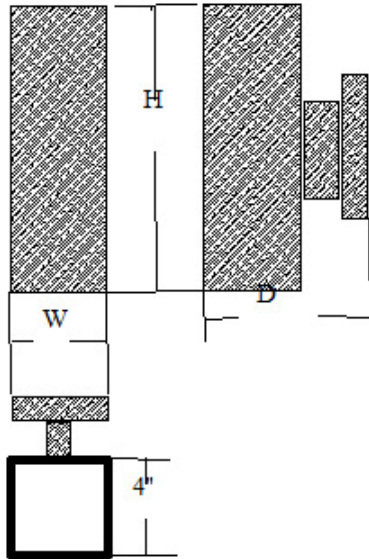


# SCONCES

## DIMENSIONS

CAT.#	W	H	D	LAMPING
2003	6"	12"	6.5"	two 75 W BR 38



## ORDERING INFORMATION

cat #--- finish-- - lamping--- voltage---- options -----

## TECHNICAL SPECIFICATIONS

BALLAST	MOUNTING	DIFFUSER	MATERIALS	FINISHES	OPTIONS
None	Mounts to all standard electrical junction boxes. Hardware included	None standard	1.25 Extruded aluminum and heavy gauge sheet aluminum.	SAL Satin aluminum  Painted finish	Top cover Bottom cover Fluorescent Outdoor (gasketed)

## FEATURES

Ideal for indoor our outdoor walls and corridors.

UL LABELED FOR damp location-----made in USA



**LIGHTING SCULPTURES, INC**

66 North Industry Court, Deer Park, NY 11729 \* 631-242-3387 \* FAX 631-242-3461